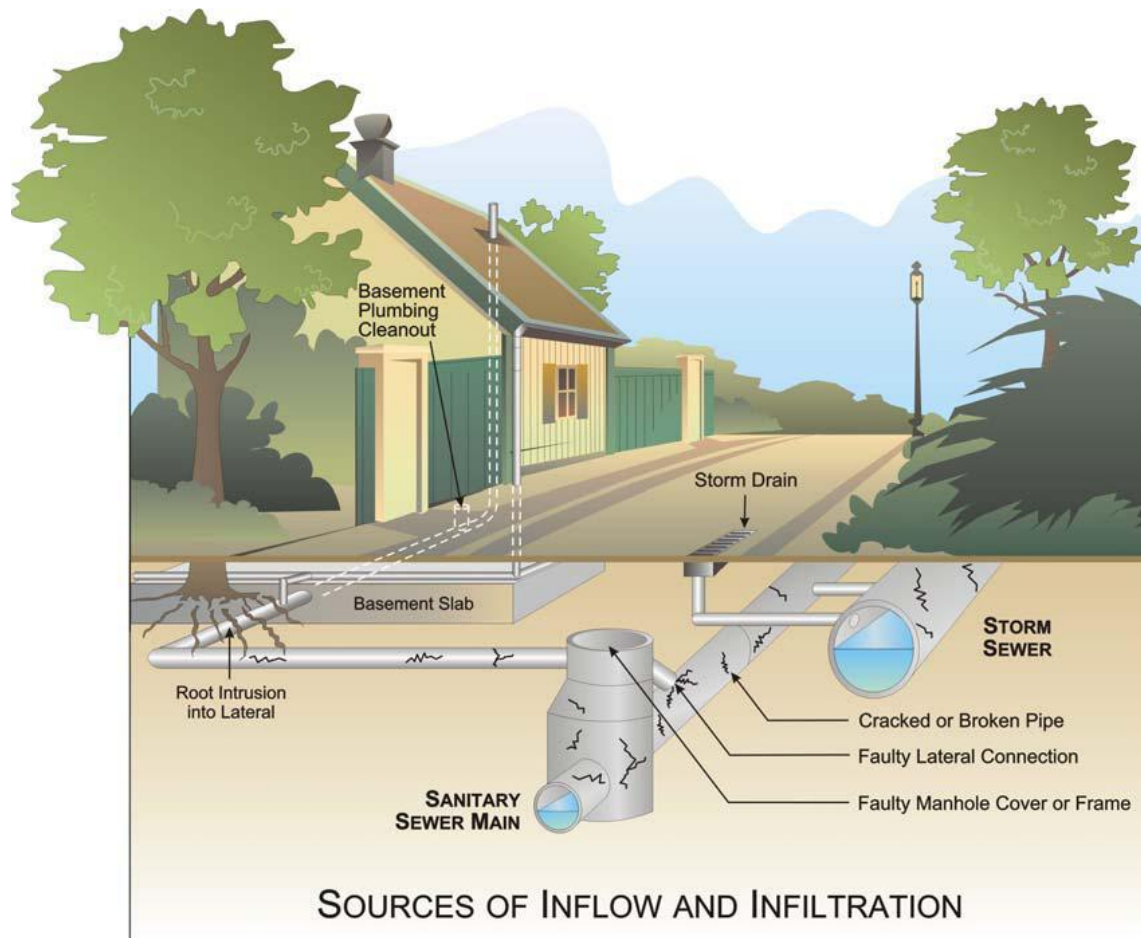


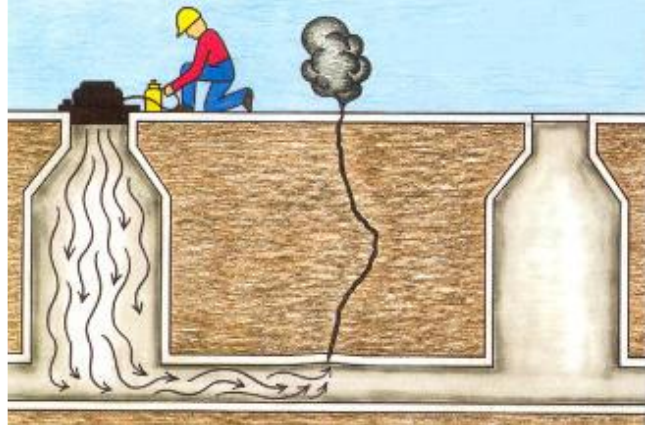
# SMOKE TESTING FACT SHEET

## What is smoke testing?

Smoke testing is a common test method used to identify sections of the sanitary sewer collection system that have defects such as cracks, leaks or faulty connections that allow rainwater to enter this underground pipe network. Since the sanitary sewer system is only designed to handle sewage, the addition of rainwater/storm water causes many problems in the collection system. The City intends to locate and repair as many of these rainwater connections as possible so that a heavy rain won't overwhelm the sanitary sewer system or interfere with the operation of the wastewater collection system.

During the test, crews will blow a dense white smoke into the sanitary sewer system. The smoke will escape again through openings such as holes in manhole covers and plumbing vent pipes located on or near rooftops. Smoke will also escape through defects such as cracks or breaks, open or broken cleanout covers, damaged or defective manhole frame seals, illegally connected roof or area drains and any other opening(s).





## Why is it important to remove rainwater from the sanitary sewers?

Excessive rainwater in the sanitary sewer essentially “robs” the pipe of capacity. This capacity or space in the sanitary sewer pipe should be used to transport sewage to the wastewater treatment plant, not rainwater. If the sanitary sewer pipe is at or near the design capacity, there is simply no available room for this extraneous rainwater. During extended periods of rainfall or after even one heavy rain many pipes become surcharged or “over full”. Since there is no room for the extra water a backup or an overflow may occur. A backup causes wastewater to “backup” into a home or business connected to the sewer line. An overflow allows wastewater to escape from manholes or other openings into the environment.

## Why testing being done my street?

The City has been inspecting the sewers and monitoring the flows throughout the city to find out where rainwater enters the sanitary sewers. The wastewater collection system in certain areas have been identified as an area that needs further testing to locate these sources of extraneous rainwater (inflow and infiltration) entering the system.

## What should I do to prepare?

Smoke should only enter your premises if the traps in your home are dry or defective, or if you have uncapped or broken drain pipes. You may want to pour some water down your drains or unused plumbing fixture(s) to ensure that the drain trap will be effective – run the water through these fixtures for approximately one minute.

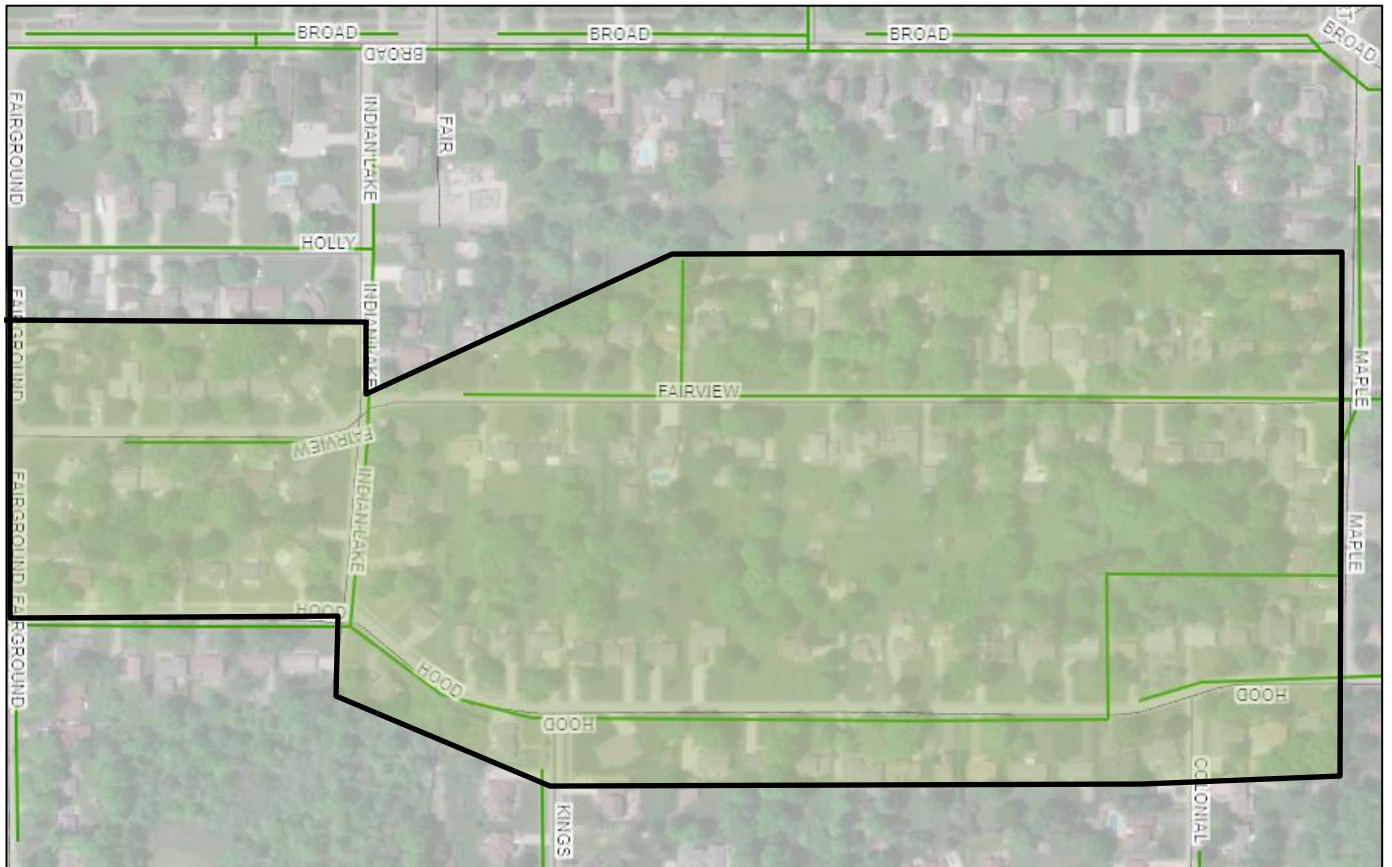
## Is the smoke safe?

Yes. If you detect smoke on your premises, **DO NOT BE ALARMED**. The smoke is **ODORLESS, NON-TOXIC AND NON-STAINING**. It will dissipate quickly. It will not harm pets or plants or leave a residue. Open a door or window for ventilation and call one of the numbers listed to report the smoke. Local fire personnel will be working with field staff and will be able to tell you the difference between smoke from the testing and smoke that could result from a fire unrelated to the testing.



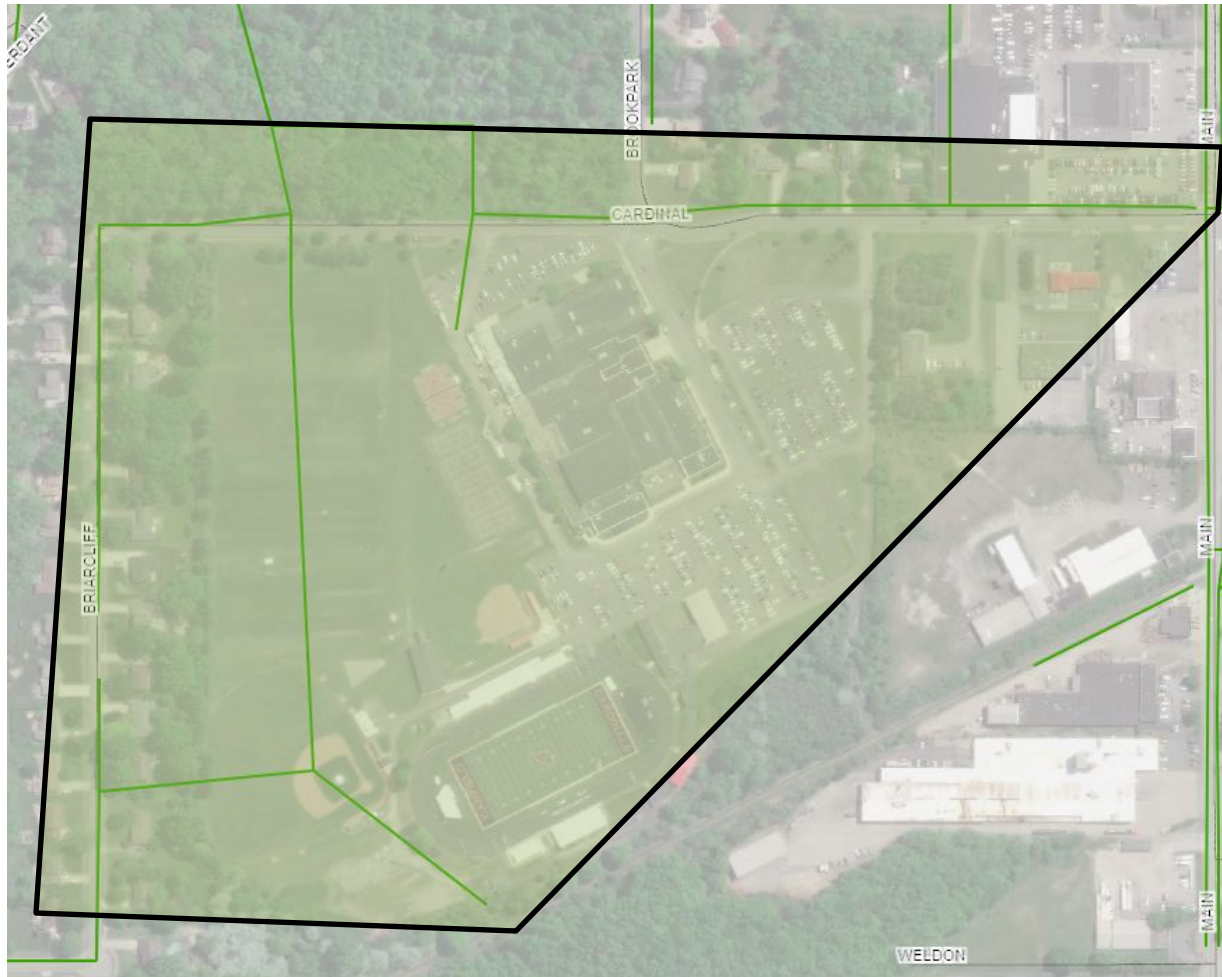
**PROPOSED AREA OF TESTING – CITY OF CANFIELD SMOKE TEST SURVEY JUNE 2022**

**Hood/Fairview (Fairground to Maple)**





**Briarcliff/Cardinal Drive (Canfield High School)**



**Where can I get more information?**

Contact Canfield City Manager Wade Calhoun at 330-286-0014 or [wcalhoun@canfield.gov](mailto:wcalhoun@canfield.gov)

# Some Typical Smoke Testing Defect Pictures

