



**CITY** *of* **CANFIELD**

**AMERICAN RESCUE PLAN ACT  
(ARPA) FUNDING FOR LOCAL  
GOVERNMENTS**



# City of Canfield

---

INFORMATIONAL PUBLIC FORUM ON INTENDED USE  
OF ARPA FUNDS

SEPTEMBER 15, 2021

# ARPA FUNDING OBJECTIVES

---

- Support urgent COVID-19 response efforts to continue to decrease spread of the virus and bring the pandemic under control
- Replace lost revenue for eligible state, local, territorial, and Tribal governments to strengthen support for vital public services and help retain jobs
- Support immediate economic stabilization for households and businesses
- Address systemic public health and economic challenges that have contributed to the inequal impact of the pandemic

The Coronavirus State and Local Fiscal Recovery Funds provide substantial flexibility for each government to meet local needs—including support for households, small businesses, impacted industries, essential workers, and the communities hardest hit by the crisis. **These funds can also be used to make necessary investments in water, sewer, and broadband infrastructure.**

# ARPA FUNDING AMOUNTS

---

**City of Canfield allocation = \$751,694**

Type	Amount (\$ billions)
States & District of Columbia	\$195.3
Counties	\$65.1
Metropolitan Cites	\$45.6
Tribal Governments	\$20.0
Territories	\$4.5
<b>Non-entitlement Units of Local Government</b>	<b>\$19.5</b>

The background of the slide is a close-up, slightly blurred image of the American flag, showing the stars and stripes. A black rectangular box is superimposed over the top-left portion of the flag, containing the title text.

**CARES ACT  
FUNDING  
UTILIZATION**

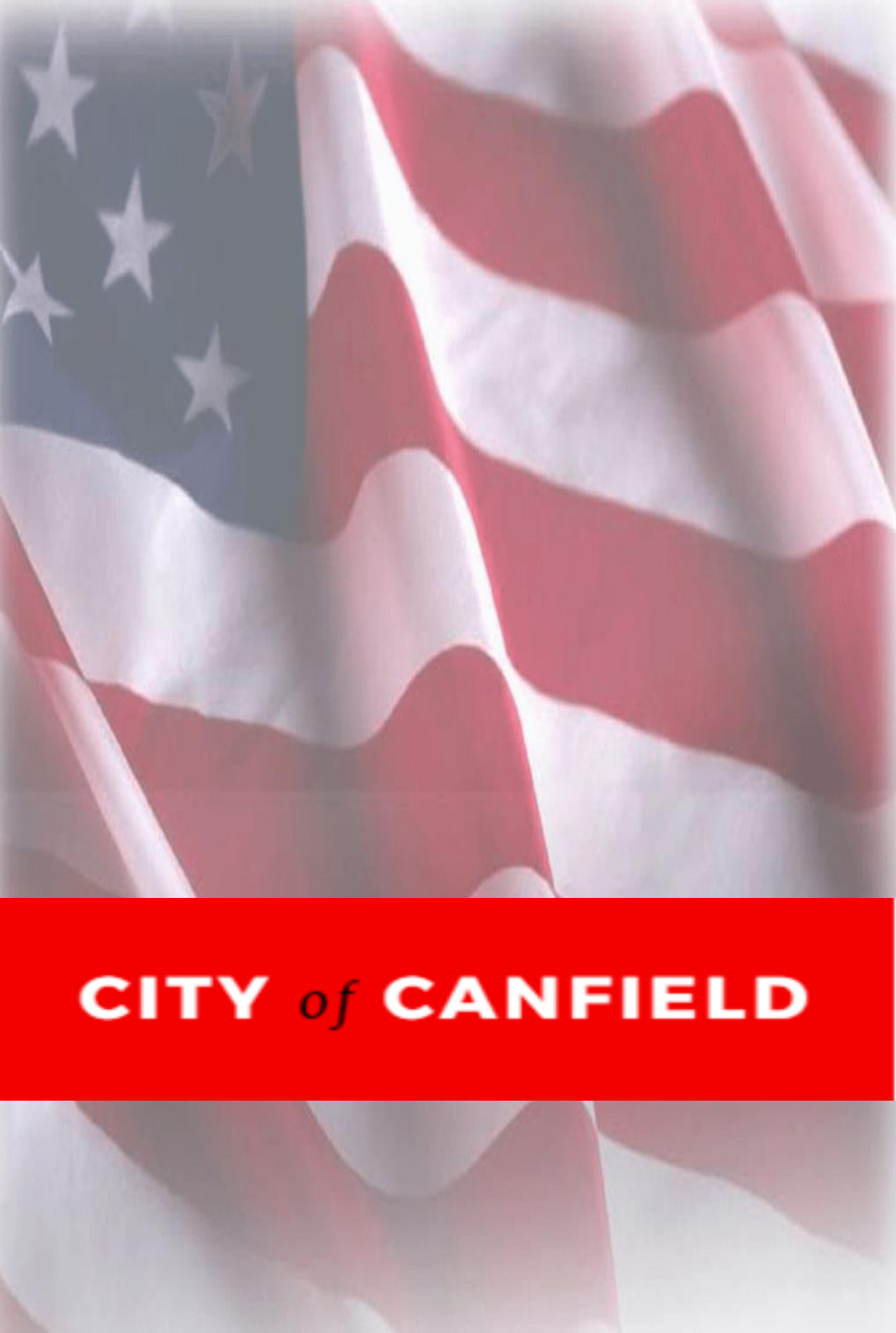
This is not the same as the  
Coronavirus Relief Funds (CARES  
ACT)

**CITY OF CANFIELD CARES  
ACT FUNDS = \$364,834**

**CITY *of* CANFIELD**

ITEM	DESCRIPTION	FUNDS UTILIZED
Remote Income Tax Filing/Payment	Allows for remote income tax transactions and filings in order to reduce public/staff interactions.	\$ 10,720
Tele-Work Capabilities / Employee Isolation	Upgrades to technology (remote work stations), reduction of person to person contact interaction during City Operations.	\$ 53,378
HVAC Air Exchange Upgrades (PD & City Hall)	Upgrades to HVAC system to allow for clean circulation within buildings.	\$ 15,600
Temporal Scanner Stations/Sanitizing Stations/Misc. PPE and COVID-19 related supplies.	Temperature scanning stations and sanitization supplies for COVID-19 Protocols put in place throughout City facilities.	\$ 11,900
Virtual Public Meetings	Upgrade City Council Chambers for the utilization of virtual public meeting attendance for citizens.	\$ 22,091
Social Distancing/Public Access restrictions/Barrier walls & glass.	Reconfiguration of Dispatch Center to appropriately social distance employees, restrict public access to City Hall areas through controlled access, barrier installation for areas with direct public interaction.	\$ 85,016
Automated Metering Infrastructure (AMI)	Pilot Program to provide the capabilities to remotely read water meters in the City of Canfield	\$ 166,129
<b>TOTAL AMOUNT</b>		<b>\$ 364,834</b>

# CARES ACT FUNDING UTILIZATION



**CITY** *of* **CANFIELD**

ARPA guidance is reflective of a new program and entering the recovery phase of the pandemic.

- Is forward looking versus previous concept of only for current pandemic
- Expands eligibility
- Emphasizes thoughtful planning and assessment

<p><b><u>CITY OF CANFIELD</u></b></p> <p><b>\$375,847 IN FY2021</b></p> <p><b><u>\$375,847 IN FY2022</u></b></p> <p><b>\$751,694 TOTAL ARPA ALLOCATIONS</b></p>
---



# ALLOWABLE USES OF FUNDS

## Cover costs incurred by December 31, 2024

- To respond to the public health emergency or its negative economic impacts, including assistance to households, small businesses and nonprofits, or aid to impacted industries such as tourism, travel and hospitality;
- To provide premium pay to essential employees or grants to employers to provide premium pay (premium pay cannot exceed \$13 per hour or \$25,000 per worker and cannot exceed certain local averages, unless specifically justified);
- To provide government services affected by a revenue reduction due to the public health emergency relative to revenues collected in the most recent full fiscal year prior to the emergency; and
- To make necessary investments in water, sewer, or broadband infrastructure.



## ALLOWABLE USES ANALYSIS

- To respond to the public health emergency or its negative economic impacts, including assistance to households, small businesses and nonprofits, or aid to impacted industries such as tourism, travel and hospitality;



Do not currently have the required resources to administer these type of programs. Would require additional resources to create the program/service.

- To provide premium pay to essential employees or grants to employers to provide premium pay (premium pay cannot exceed \$13 per hour or \$25,000 per worker and cannot exceed certain local averages, unless specifically justified);



Requires COVID specific time tracking (Limited occurrence among City of Canfield personnel)

Personnel adjustments made to mitigate exposure.

**Meter Reader exposure mitigated by not entering homes.**





# ALLOWABLE USES ANALYSIS

- To provide government services affected by a revenue reduction due to the public health emergency relative to revenues collected in the most recent full fiscal year prior to the emergency;



Cumbersome calculations to justify revenue supplement, do not believe any specific area or City revenue streams were substantially affected by pandemic.

## Government Services/Revenue Loss – Calculation

Four step process (see the Interim Final Rule for details and an example):

- 1) Identify “general revenue” in the most recent full fiscal year prior to the pandemic (January 27, 2020). This will be your **base year revenue**.
- 2) Estimate what your revenue should have been absent the pandemic; this is called your **counterfactual revenue**. This can be estimated using the following calculation:

$$\text{counterfactual revenue} = \text{base year revenue} * [(1 + \text{growth adjustment})^{(n/12)}]$$

- *n* = the number of months elapsed since the end of the base year to the calculation date
- **growth adjustment** = the greater of 4.1 percent and average annual revenue growth in three full fiscal years prior to the pandemic

- 3) Identify **actual revenue** which equals revenue collected over the past twelve months as of the calculation date.
- 4) Reduction in revenue is equal to **counterfactual revenue less actual revenue**.

# ALLOWABLE USES ANALYSIS

To make necessary investments in **water**, sewer, or broadband infrastructure.

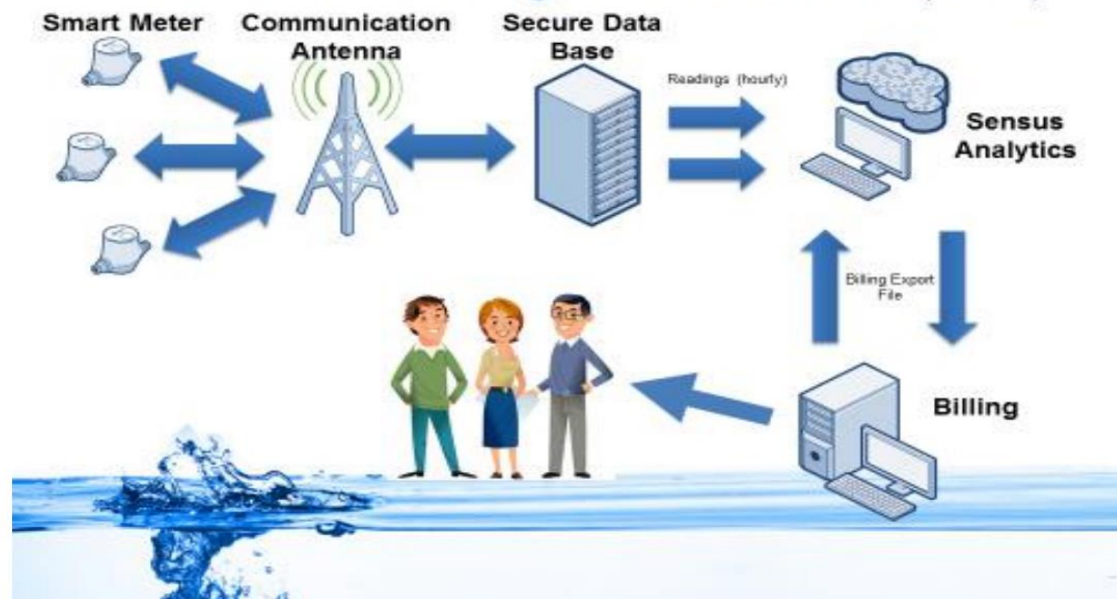
- Infrastructure Water/Sewer (HB168, Ohio EPA Loans)



## Automated Metering Infrastructure (AMI)

- Meets a local need (pandemic related public health concern)
- Personnel Exposure (Meter Reader)
- Initial Investment already made
- Expand the capabilities of public services

## Advanced Metering Infrastructure (AMI)





## AMI ANALYSIS

1. Provides the maximum impact for the City of Canfield
  - Utility Billing Customers
  - City Operations
2. Reduces COVID Exposure risk (present & future).
  - Meter Reading done remotely
  - Meter troubleshooting
  - Customer Service enhanced
3. Gives greater control to customer on managing and monitoring water consumption.
4. Monthly billing reduces large financial impact to household.

# ARPA UTILIZATION PLAN

---

## Automated Metering Infrastructure Project

- Approximately 3,300 utility accounts in the City of Canfield.
- Pilot Program installed infrastructure and approximately 240 smart meters in the City of Canfield.
- 1,000 Meter installations during each year 2022, 2023, & 2024.

# ARPA UTILIZATION PLAN

---

Each Smart Meter installation requires Meter, Smart point, Touch Pad & Connections.

Total cost per device is approximately \$265.

**3,000 meters x \$265/meter = \$795,000 in needed funds**

**ARPA Funds = \$751,694 (remaining funds will come from Water Fund)**

---

# QUESTIONS?

